
Te sqwélqwels te ts'elhxwélmexw. *The story of the family.*



Photo courtesy of Neal Mussell.

Sources of Information

The database was created with family knowledge that has been collected over many years by various researchers and from community members willing to share their history.

The database also has records from the following:

- Church records
- Federal Government Records
- Provincial Government Records
- Interview transcripts
- Local histories/published books
- Other

Contact Info:

Lisa Davidson

Genealogy Office—SRRMC

Room #212 / 10-7201 Vedder Road

Chilliwack, BC V2R 4G5

604-824-5234

Open Monday to Friday 9:00 a.m.—1:00 p.m.

If you require an appointment outside of the above times, please call/email to make arrangements.



Genealogy Office - SRRMC

Te sqwélqwels te ts'elhxwélmexw. *The story of the family.*

Genealogy Office Stó:lō Research and Resource Management Centre



Te sqwélqwels te ts'elhxwélmexw.

The story of the family.

Genealogy Office

About the SRRMC Genealogy Office:

Our Stó:lō Family Tree database houses over 47,000 names and 13,000 marriage records.

The majority of our records are Stó:lō ancestors but there are some records from other territories.

We encourage everyone to update their current information (i.e. add new babies, marriages, etc.).

What we offer:

- Family history research
- Family tree information
- Large-scale printing of pedigree and descendant charts
- Family history data entry
- All services are open to all Stó:lō communities

Because the genealogy researcher is only part-time, requests can take a bit of time to process. Filling out a request form and making an appointment will make the process quicker.

Frequently Asked Questions:

Q: Why don't you have all of my ancestors names?

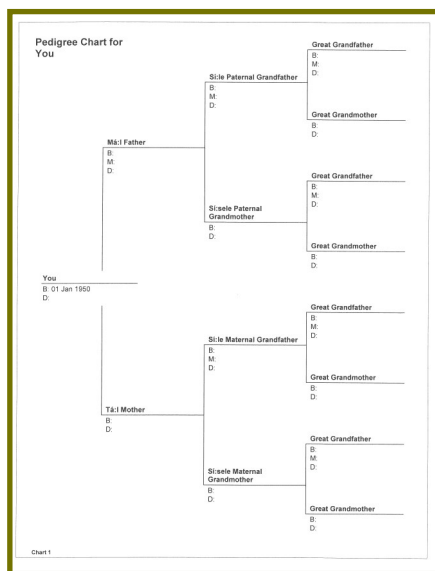
A: Even though the database has over 46,000 names, we don't have everything. We rely on community members to come in and share their family history with us to record.

Q: Who can access information?

A: This service is open to all Stó:lō communities. You have access to your family's information.

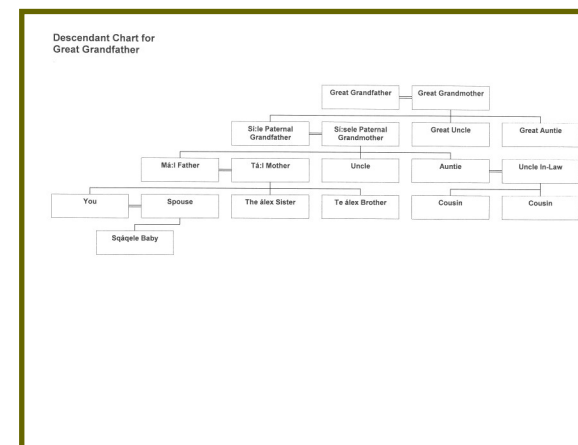
Q: What is a *Pedigree Chart*?

A: A pedigree chart starts with you (or selected ancestor) and shows the parents, grandparents, and so on. It is the selected person's direct lineage.



Q: What is a *Descendant Chart*?

A: A descendant chart displays all of the direct relations of the selected person. This includes aunts, uncles, cousins, and so on.



Q: Will my family tree help me gain status?

A: The family trees are for information purposes only. For inquiries regarding status eligibility please contact Leona Sam 604-858-3366 or INAC 1-800-567-9604.

Q: How do I make an appointment?

A: Call Lisa Davidson at 604.824.5234 or email her at

lisa.davidson@stolonation.bc.ca